

**User's Manual
LaCie USB Peripherals
for Macintosh and PC**



Copyrights

Copyright © 1999 LaCie. All rights reserved. No part of this publication may be reproduced, stored in a retrieval system, or transmitted in any form or by any means, electronic, mechanical, photocopying, recording or otherwise, without the prior written consent of LaCie.

Trademarks

All trademarks and tradenames quoted in this document and not listed above are protected by copyrights and belong to their respective owners. Companies, names and data used in examples herein are fictitious unless noted otherwise.

Changes

The material in this document is for information only and is subject to change without notice. While reasonable efforts have been made in the preparation of this document to assure its accuracy, LaCie assumes no liability resulting from errors or omissions in this document, or from the use of the information contained herein. LaCie reserves the right to make changes or revisions in the product design or the product manual without reservation and without obligation to notify any person of such revisions and changes.

Federal Communications Commission Radio Frequency Interference Statement (FCC)

WARNING: Changes or modifications to this unit not expressly approved by the party responsible for compliance could void the user's authority to operate the equipment.

This equipment has been tested and found to comply with the limits for a Class B digital device, pursuant to Part 15 of the FCC Rules. These limits are designed to provide reasonable protection against harmful interference when the equipment is operated in a commercial environment. This equipment generates, uses, and can radiate radio frequency energy, and if not installed and used in accordance with the instructions, may cause harmful interference to radio communications. However, there is no guarantee that interference will not occur in a particular installation. If this equipment does cause harmful interference to radio or television

reception, which can be determined by turning the equipment off and on, the user is encouraged to correct the interference by one of the following measures:

- Reorient or relocate the receiving antennas.
- Increase the separation between the equipment and the receiver.
- Connect the equipment into an outlet on a circuit different from that to which the receiver is connected.
- Consult the reseller or an experienced radio/TV technician for help.

Shielded cables and I/O cards must be used for this equipment to comply with the relevant FCC regulations.

This device complies with Part 15 of the FCC rules. Operation is subject to the following two conditions: (1) this device may not cause harmful interference, and (2) this device must accept any interference received, including interference that may cause undesired operation.

Canada Compliance Statement

This Class A digital apparatus meets all requirements of the Canadian Interference-Causing Equipment Regulations.

Manufacturer's Declaration for CE Certification

We, the LaCie Group SA, solemnly declare that this product conforms to the following European standards:

Class B EN60950, EN55022, EN50082-1, EN60555-2

With reference to the following conditions:

73/23/EEC	Low Voltage directive
89/336/EEC	EMC Directive

This page intentionally left
blank for pagination

table of contents

1. Introduction	6
a) LaCie external USB hard disks and removable drives	7
b) LaCie CDRW drives.	9
2. LaCie USB drive accessories	10
3. Connection	10
4. Software installation for Window 98	12
a) LaCie USB drivers installation	12
b) Silverlining 98 software installation	15
c) Uninstalling Silverlining 98 software	24
d) Uninstalling LaCie USB drivers	24
5. Software installation for Mac OS	26
a) Driver installation	26
b) Silverlining Pro installation	27
c) Uninstalling LaCie USB drivers	28
Appendix 1 – Technical information	29
a) Technical details	29
b) User advice	29
c) FAT 32 file assignment table	30
Appendix 2 – Questions & Answers	32

Introduction

LaCie USB peripherals were created to connect fixed and removable mass storage peripherals to computers equipped with Macintosh (MacOS 8.5 or newer) and PC-compatible (Windows 98 or newer) computers with USB ports complying to USB version 1.00 or newer.

Important: iMac users must upgrade to MacOS v8.5.1 or later.

The USB standard is relatively new and has been incorporated into desktop and portable computers to provide easy connection of peripherals.

The USB (Universal Serial Bus) is a serial bus created by the telecommunication and computer industry. This bus represents a technological step forward. External devices can be easily connected using "Plug & Play" concepts. Computers equipped with USB ports automatically recognize and install USB peripherals that are physically connected to them. The installation of interface cards is not necessary, nor is reconfiguration, as long as the computer is equipped with compatible USB ports. The USB standard can manage a maximum of 127 peripherals, operating simultaneously on the same bus. These peripherals are keyboards, mice, game consoles, hubs, and now storage products.

For further information see Appendix 1 in this guide.

LaCie USB drives use internal IDE or ATAPI storage devices. These are connected to the USB port of your computer thanks to a controller card developed by LaCie. This card acts as a bridge between the USB bus signals and the IDE/ATAPI disk interface.

LaCie drives are available in different configurations as listed below:

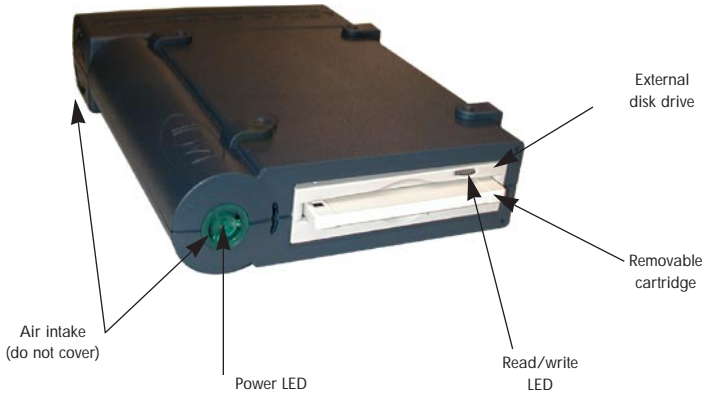


Figure 1 – LaCie USB external disk drive

a) LaCie external USB hard disks and removable drives.

LaCie USB removable drives (Magneto-Optical drives, CD-RW drives, etc...) will store and exchange data between several computers.

Please note that to exchange data among several computers, discs and cartridges must be formatted by similar operating systems and file systems.

Two file systems are currently available for PCs: FAT 16 and FAT 32 (appendix 1, §C). Windows 98 can convert your peripheral to FAT 32. But if the computer on which you need to use your cartridge only works in FAT 16, the data on your disk cannot be read. In order to avoid reading problems we advise you to prepare your disk and cartridges for FAT 16. The Silverlining 98 software formats cartridges in FAT 16 by default. This way, they can be read on all PC computers currently sold.

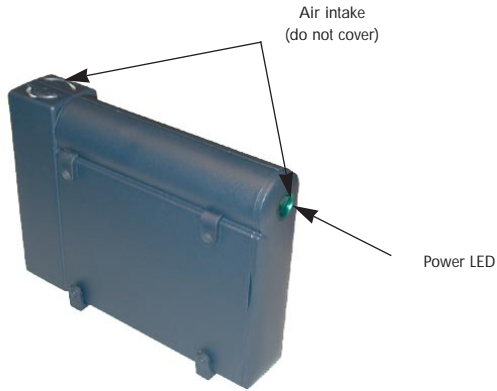


Figure 2 – LaCie USB hard disk

LaCie USB hard disk drives can be used to back up your computer's internal hard disk. They can also be used to store files used by your applications. However, for performance reasons, it is recommended to run software from the internal hard disk of your computer.



Figure 3 – Rear view of LaCie USB drives

b) LaCie CD-RW drives.

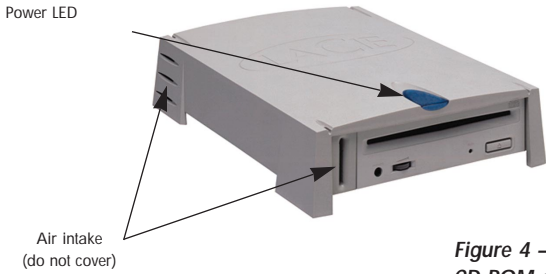


Figure 4 - LaCie external USB CD-ROM drive or CD recorder

With LaCie external drives and driver software, you will be able to read data or audio discs, to write your own CDs and to rewrite CD-RW discs through the computer's USB port. For more information on using CD recorders and CD rewriters, please refer to the documentation relating to the recording software you are using.

2. LaCie USB drive accessories

The following items are delivered with your LaCie USB drive:

- 1 USB cable to connect your USB drive to the computer's USB connector.

Figure 7 – USB cable connectors



- 1 power cable.
- 1 installation guide (this guide).
- 2 diskettes (*) for the Windows 98 installation:
 - The 1st diskette "Silverlining 98 1/2" contains the Silverlining 98 installation software. This application allows you to test, manage and format LaCie drives under Windows 98.
 - The 2nd diskette "LaCie USB Drivers-Silverlining 98 2/2" contains the rest of the Silverlining 98 installation software. This disk also includes a Windows 98 driver for USB, a SCSI miniport driver and files for Windows 98.
- For Macintosh kits, 1 hybrid CD-ROM Mac/Windows. The Macintosh partition of this CD contains :
 - "USB eko driver" and "USB eko shim" System extensions to make LaCie peripherals recognized by the Macintosh USB port.
- The Windows partition of the CD contains the Windows 98 utilities for users who prefer to install through a CD-ROM drive.
- For CD recorders, 1 LaCie recording utilities CD-ROM containing specific applications enabling to record your own CDs.

3. Connection

To install the LaCie USB peripheral on a computer, connect the disk to the USB port and turn on your computer, or connect while your computer is already running. To

make the best use of your peripheral, please follow these procedures:

Connect the power cables of both the computer and the LaCie USB drive. Turn on the LaCie USB peripheral. In the case of a removable or magneto-optical drive, you must make sure the cartridge is inserted into the drive (*).

Turn on your computer.

When the computer's desktop is displayed, connect the LaCie USB peripheral to your computer using the USB cable supplied.

Install the required software as indicated in the following chapters.

(*) Warning :

After this procedure, the partitions on the cartridge will be viewed by your system just as on a hard disk.

If you divide a cartridge into several partitions (using hard disk type formatting) and if the cartridge is not inserted in the drive when you start up your computer, the system will detect only one partition during cartridge load. We recommend to make only one partition on cartridges (removable-type formatting).

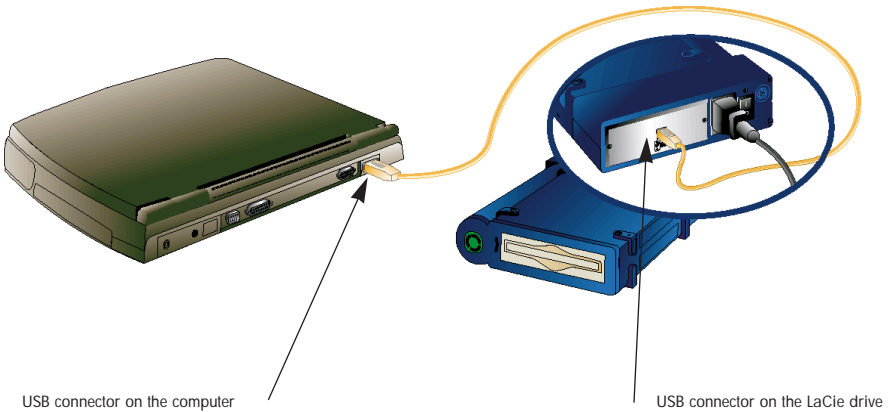


Figure 8 – Connection to a computer equipped with a USB port

4. Software installation for Windows 98

LaCie products have been developed for Windows 98. If your machine runs under Windows 95 or Windows 3.x you must install Windows 98 in order to connect a LaCie USB peripheral.

a. Installation of LaCie USB drivers.

After the first connection of a LaCie USB peripheral the computer automatically detects the drive and the following message appears on the screen:

Windows has detected new equipment
USB Mass storage class driver

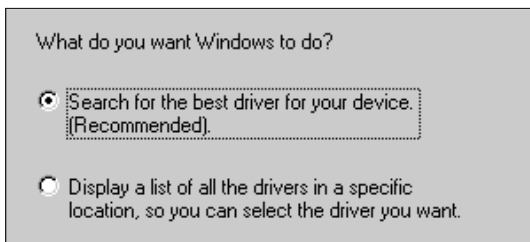
The following window is displayed to confirm installation:



Note :

The first time the USB drive is connected to a computer's USB port, it is detected and installed as a new peripheral, even if you have previously installed it on another port on the same USB bus.

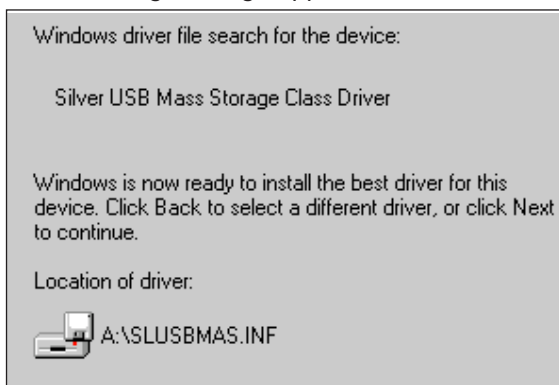
Click on "Next", The following choice is offered:



Click on "Search...". The following choice is offered:



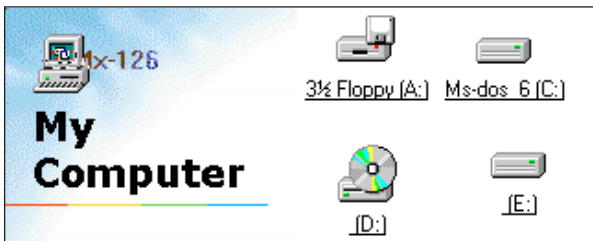
Now insert the CD-ROM or (2/ 2) diskette in the floppy drive and click on "Floppy disk drives" The following message appears:



Follow the instructions that appear and let Windows install the USB driver of your LaCie drive. The following message appears indicating that the operation is completed:

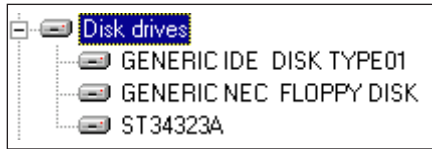


By clicking on the "My Computer" icon, you will see a new icon corresponding to the LaCie peripheral connected to your computer's USB port (icon "E: " in the example below).



In the menu "System properties", the following screen will appear. To access it, do the following:

- Select "My Computer",
- Click on the right-hand button of the mouse
- Select "Properties", and "Peripherals manager"



- Double click on the sub-menu "Disk drives" and "USB bus Controller" on the sub-menu confirming that the LaCie USB disk equipped with ST34323A hard disk has been correctly installed:
- USB bus controller
 - USB mass storage driver
- Disk drive
 - ST34323A

Warning:

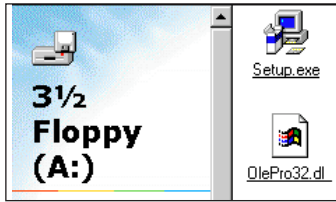
Double click on the disk type (ST34323A in our example), then on the heading "Settings". Verify that the "INT13" box isn't checked. For correct operation of the drive this option must be inhibited.

b) Installation of Silverlining 98 software.

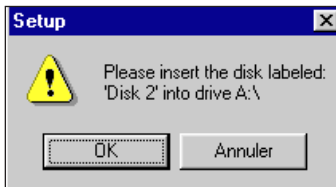
The Silverlining 98 software is a program, which can be used to prepare, modify and configure your LaCie USB peripheral. It also recognizes LaCie SCSI and parallel port peripherals.

Once the LaCie USB peripheral is connected to the USB port of your computer and once the LaCie USB drivers are installed, you can proceed to the installation of the Silverlining 98 software, as described below:

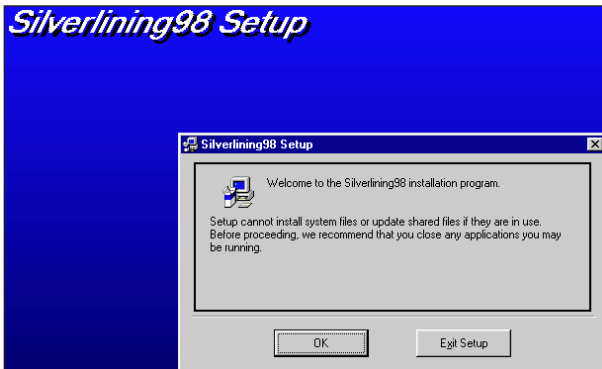
Insert the Silverlining 98 (1/ 2) diskette and execute the SETUP.EXE program.



Follow the on screen instructions. When the following message appears, insert the "2/ 2" diskette in the floppy drive.

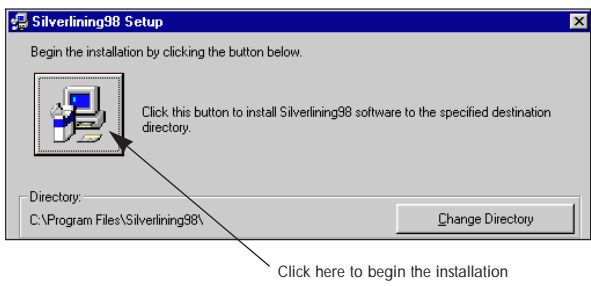


After a few seconds, The Silverlining set-up page will appear:

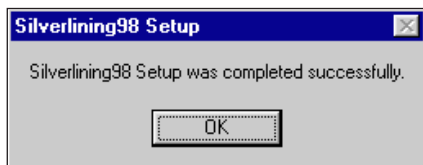


Click on "OK",

To select and enter the specifications of an installation directory different from the default settings, use the following window:



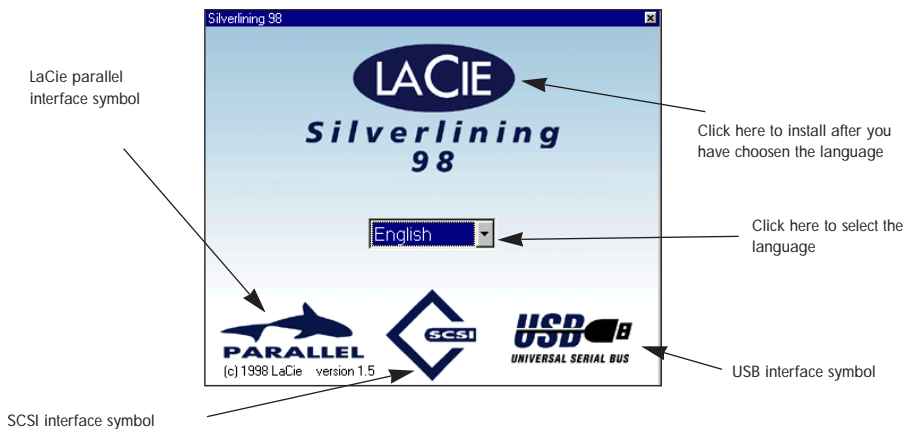
To keep the default installation directory, click on the icon showing a computer. The software will copy the files necessary to its execution in the "C: \Program Files\Silverlining98", directory and will update system files. Follow the on-screen messages until the end of installation message appears.



Once installation is complete, start up Silverlining 98 from the task bar, using the command:

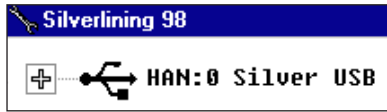
"Start/Program/Silverlining 98"

The following message appears. Use this window to select the language (French or English) in which Silverlining 98 on-screen messages will be displayed.

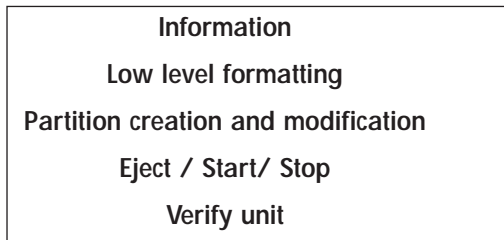


Click on the arrow and select the required language. Click on the LaCie logo to continue.

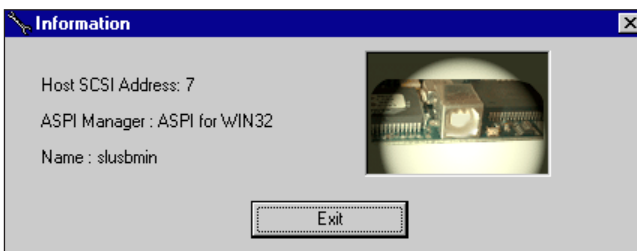
The next screen shows the number of ASPI controllers installed in your system. In our example, a LaCie USB peripheral is installed:



Select the Silver USB icon and click on the right mouse button. The following menu comes up on-screen:



Click on "Information". Information concerning the ASPI SCSI address and the name of the installed driver appears:

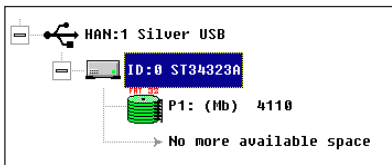


Close this window and double-click on the controller icons in order to show the peripherals connected to this controller.

In our example, one 4GB ST34323A hard disk is attached to the LaCie USB controller



Double click on the icon of the disk connected to the Silver USB controller in order to display the number and size of each partition created on the disk. The available space on the disk is displayed below the partitions.

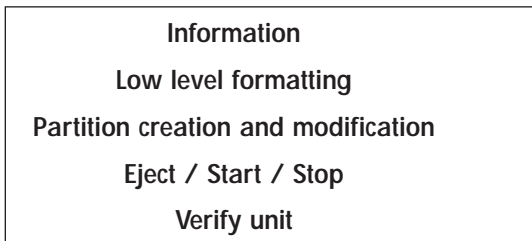


You can notice that FAT 32 appears above the P1 volume icon. This means that the disk has been prepared with a format supporting large-sized partitions, contrary to FAT 16 used by Windows 95, which cannot handle more than 2 GB per partition.

Please note that only FAT 32 compliant computers (Windows 98 and Windows NT 5.x) can read the information on this disk.

Select the "ID: 0 ST34323A" icon, and click on it with the right mouse button.

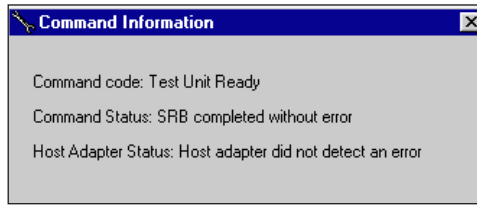
The following menu will appear:



Click on the **"Information"** option, and information about SCSI IDs, device type, vendor and revision of the peripheral installed will appear:



Click on the **"Verify unit"** option. The next screen shows operating test results. No error message should appear. If it does, you should contact your dealer.

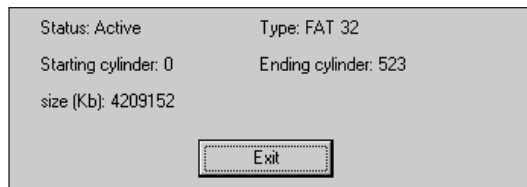


Option **"Eject- Start - Stop"**

"Eject" enables ejection of media for removable drives.

"Start/Stop" allows stop and start-up SCSI hard disks.

Double click on the **"P1: 4110 MB"** icon or select it, then, click on the right mouse button and select the **"Information"** menu. The next screen shows the state and size of the partition:

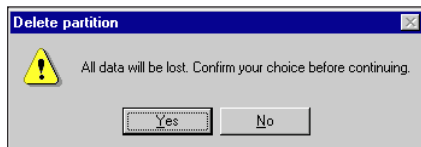


Close this window and select the **"P1: (MB) 4110"** icon, then, click on the right

mouse button and validate the menu **"Partition creation and modification"**. Use this option to remove partitions or to create new ones.

Note :

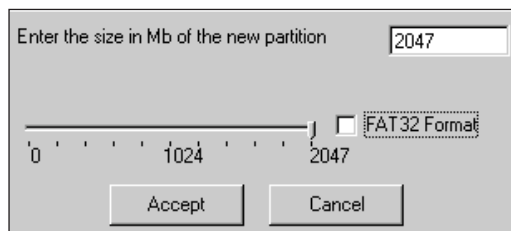
This option is only available for the last partition of a hard disk and for the unused part.



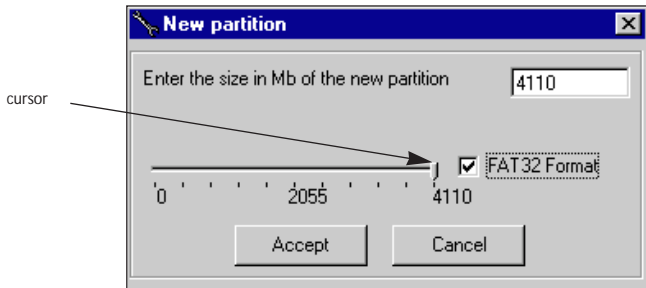
If you answer **YES**, the space used by this partition becomes available and the information it contained is immediately lost. The following screen appears:



Highlight **"4110 MB free space"**, click on the right mouse button and validate **"Partition creation and modification /Create"** in order to create one or several new partitions:

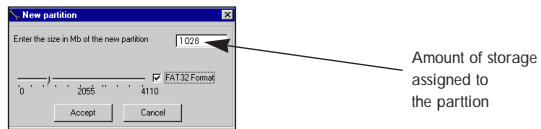


As you can notice, the maximum size authorized is 2 GB in FAT 16. If you click on FAT 32 format, the maximum size of your disk (4,110 GB in our example) will be authorized

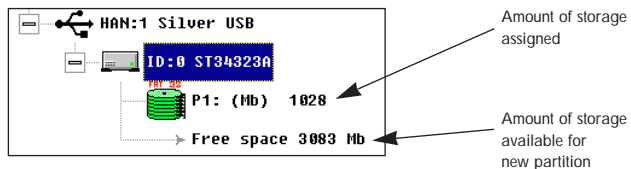


Move the cursor to adjust the partition size to the required storage capacity. For this:

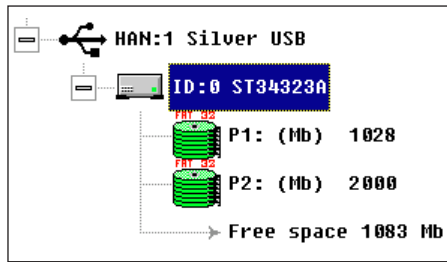
- Click on the cursor with the left mouse button and drag the cursor to the required storage amount (i.e.: 1,028 GB) or,
- Click once on the cursor with the left mouse button and move it using the "arrow" keys on your keyboard.



Click on "Accept" to begin formatting the first partition.

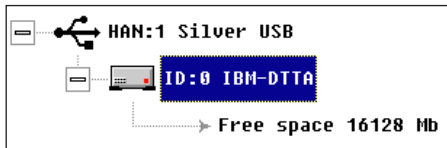


Highlight "3083 MB free space", click on the right mouse button and validate "Partition creation and modification /Create" in order to create one or several new partitions.

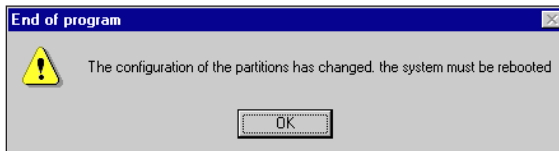


Your 4 GB disk preparation is finished.

The following is an example for a 16 GB hard disk:



Once the LaCie USB drive has been configured, click on "EXIT". The following screen appears:



The computer will automatically restart and reset the system to take into account the new partitions.

From that point and at each startup of your computer, the LaCie USB drive will be recognized in "Plug n' Play" mode.

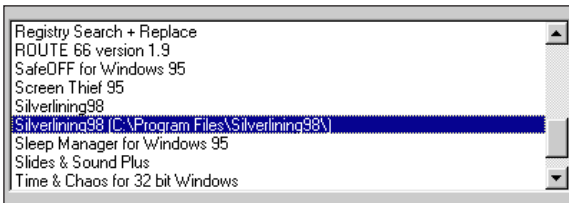
c) Uninstalling Silverlining 98 software

When the installation has failed or when you need to update Silverlining 98, you will have to uninstall the application. For this, please use the following procedure:

From the Windows 98 task bar, enter:

Start/Settings/Settings /Add_Remove a program

Delete the lines where the name Silverlining 98 appear, starting with the line highlighted below:



Re-install Silverlining 98 as shown in paragraph 4b.

d) Uninstalling LaCie USB drivers

When the installation has failed or when you need to update LaCie USB drivers, you will have to uninstall the drivers. For this use the following procedure:

- Disconnect your computer's USB cable
- Insert the 2/2 disk into drive "A: " and open the "My Computer" icon on the desktop window.
- Double click on the "A : floppy drive" icon to show files contained on the disk.
- Double click on the "SLremove.bat" software icon to execute it. The following message appears :


```

REG
Auto
A:\REMOVE>reg.exe delete HKLM\Enum\USB\VID_059F&PID_0601
Permanently delete Enum\USB\VID_059F&PID_0601 and all values/subkeys (Y/N)?

```

- Enter "Y " to validate. The following screen will appear to confirm the uninstallation of the USB drivers :

```

A:\REMOVE>reg.exe delete HKLM\Enum\USB\VID_059F&PID_0601
Permanently delete Enum\USB\VID_059F&PID_0601 and all values/subkeys (Y/N)? y
L'opération s'est terminée.

A:\REMOVE>del c:\windows\system\slusbmas.sys

A:\REMOVE>del c:\windows\system\iosubsys\slusbmin.mpd

A:\REMOVE>del c:\windows\inf\other\LaCie*.inf

A:\REMOVE>

```

- Exit from the MSDOS window by clicking on the cross at the top right of the window.
- Select "My Computer".
- Click on the right button of the mouse.
- Select "Properties", then the tag "Peripherals"
- Double-click on the sub-menu "Disk Drive"and highlight "Silver USB Mass Storage Class Driver"
- Click on "Uninstall"to delete the LaCie USB drivers.
- Restart Windows 98.
- From the Windows 98 Task Bar enter:

Start/Stop /Restart and validate

- Once your computer has restarted, carry on the LaCie USB driver installation (paragraph 4a).

5) Software installation for Mac OS (8.5.1 or newer)

a) Driver installation

When you connect the LaCie USB peripheral for the first time, your computer will automatically detect the drive, and the following message appears:

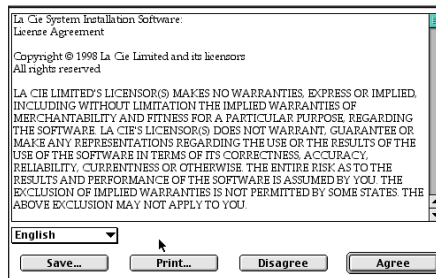


To install the necessary software resources, follow these instructions:

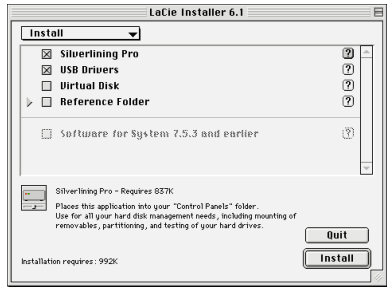
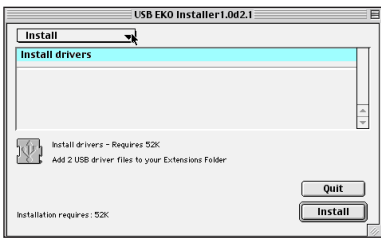
- Insert the LaCie CD in the CD-ROM drive.
- Open the CD icon and double-click on "USB EKO installer" or the LaCie Installer 6.1 if shipped with Silverlining Pro 6.1
- The following message appears:



- Click on Continue. The following appears:



- Select the language you wish to install.
- Click on "Accept".
- The following window appears:



- Click on install.

A message appears to confirm that the installation was successful:



- Click on "Restart" if you want to use your USB peripheral immediately.

If you want to make other installations click on "OK".

b) Silverlining Pro installation (if provided with your drive)

From version 6.1 onwards, Silverlining Pro supports LACIE USB peripherals. Use Silverlining Pro to format, to create partitions, to partition and to set up passwords on volumes. Check www.lacie.com for availability.

To install:

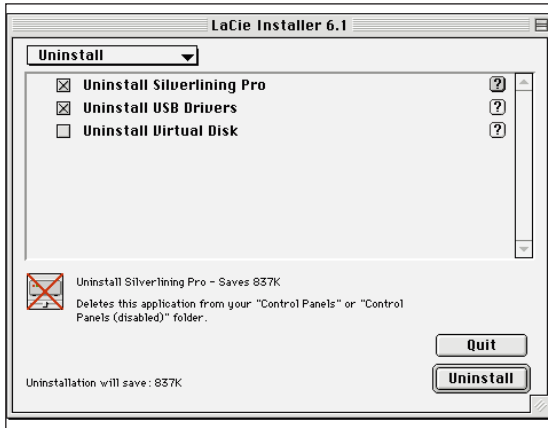
- Insert the LaCie CD in the CD-ROM drive.
- Double-click on the LaCie Installer 6.1 and follow instructions.
- Restart your machine.
- Open Silverlining Pro from the Control Panel in the Apple menu.

For further information on Silverlining Pro, please refer to the Silverlining Pro manual. Without Silverlining Pro 6.1, your USB hard disk will appear as one or more volumes.

c) Uninstalling LaCie USB drivers.

When the installation has failed or when you need to update LaCie USB drivers, you will have to uninstall the drivers. For this, proceed as follows:

- Disconnect the USB cable from your computer
- Insert the LaCie CD in the CD-ROM drive and double click on the "install" icon
- Once you get to the last step of installation, choose the "Uninstall" menu:



- A message confirms that the installation was successful.
- Click on "Restart" or on "OK" if you want to remove anything else.

Appendix 1 – Technical information

The following technical information relates to your LaCie USB peripheral and gives some practical advice:

a) Technical details

- Disk management is ensured by a set of command codes, with access controlled by Windows 98® or Mac OS system files.
- You cannot boot from your USB peripheral.
- The LaCie drive manages power consumption. When the system is in power save mode, the disk stops and access is impossible. When the system returns to full power the disk will start up again before the system can access the disk.
- The USB disk will appear as one or more disk icons "D : " or other drive letter, in the Windows 98 "My Computer" directory. It will follow other storage devices already installed on your computer. If your disk isn't recognized, check the setting of, "Lastdrive=XX" in the start-up file "Config.sys". If XX is equal to "D : ", you can't have a disk with a drive letter higher than "D : " in your system. Look in your Windows/MS-DOS User's Guide for more information about the "Lastdrive "command.

b) Using your drive with iMac, Blue & White G3 (B&W G3) and other USB equipped Macintosh Computers

Your USB hard drive may come pre-initialized with several 2GB PC FAT16 DOS partitions. This allows you to use the drive immediately on both your PC or Macintosh computer immediately after installing the LaCie USB drivers. There is no need to reformat. You can easily share your data files on both the PC and Macintosh computers.

You must have PC Exchange or Apple File Exchange installed and enable on your Macintosh to allow mounting of PC formatted disks. Either is installed by default by Apple.

If you want to reformat your drive for only Macintosh use, You can do so using the

following steps:

- Use Silverlining Pro to format, initialize, and partition your drive

or

- use the Finder to “erase” your disk. You must first disable Apple File Exchange (PC Exchange).

Silverlining Pro will allow you to partition your drive, and to password protect your volumes for security. Once formatted for the Macintosh, you will not be able to use the drive on a PC, unless you reformat the drive on the PC using the PC driver software included with your drive.

Silverlining Pro allows you to initialize volumes/partitions as HFS or HFS+ (Standard and Extended partitions respectively). It is more efficient to use HFS+ formatting for your drive.

Using Finder to “erase” you disk only allows you to set up the drive as one volume.

c) What files are installed for USB on the Macintosh?

Two files are placed in the Extensions folder of your System folder:

- USBLaCieDiskDriver
- USBLaCieDiskUTDriver

Both are necessary for proper performance.

d) Interface Considerations

For optimum performance while the LaCie drive is making transfers, we recommend that you wait before launching other applications using the USB port.

Anomalies may arise with computers with USB controllers that do not conform to standards. Your product has been tested and checked on computers with Intel or Apple USB platforms. In any other configurations we cannot ensure 100 % correct operation. You may encounter hanging problems. If this happens, proceed as follows:

- Check that your USB cable is certified to 12 Megabit per second (12Mbps). This is the case with the cable supplied with your LaCie drive.
- Check that the power supply and ground connection are correct.
- Disconnect your computer's USB cable. Wait 30 seconds and reconnect it.

- Check the Windows 98 version installed on your computer. Supported versions of Windows 98 are 4.10.1998 and later. To check the version number, you need to execute the program "System".

To proceed, launch the following command from the Windows 98 Task Bar:

Start/Settings/Control Panel/System

If your USB drive is still not recognized or if you encounter any difficulties, check the type of USB controller available in your computer. You can access it from the Task Bar of Windows:

**Start/Settings/Control Panel/System
Peripheral manager/ USB bus controller**

Double click on "USB Bus controller", the USB controller type appears on the 2nd line, e.g.:

Intel 82371 SB PCI to USB universal Host controller.

Double click on this line and note the information which follows in order to communicate it to your dealer's technical support:

- Peripheral type
- Manufacturer
- Equipment version
- Peripheral state.

e) FAT 32 file assignment table

FAT 32 conversion software is available under Windows 98.

For this, execute:

Start/Programs/Accessories/System Tools/Drive converter (FAT 32)

The drive converter will convert your drive to the FAT32 file system, an improved format file system of the file assignment table (FAT or FAT16). When the drive is prepared in this format, data storage is optimized, and hundreds of Megabytes of free space are liberated on the drive. Applications run faster and your computer will use less of the systems resources.

- Once you have converted your hard disk to FAT32 format with the help

of the Drive Converter, you cannot go back to FAT16 format unless you repartition or reformat your FAT32 drive. If you have converted the drive on which Windows 98 is installed, you need to re-install Windows 98 after you have repartitioned the drive.

- Most disk compression software is not compatible with the FAT32 format. If your drive is compressed, you might not be able to convert it.
- If you convert a removable disk and want to use this disk with other operating systems that are not compatible with FAT32, you will not be able to access the disk.
- Due to the fact that former versions of Windows are not compatible with FAT32, you will not be able to uninstall Windows 98 after conversion.
- Even though most programs will not be affected by the FAT16 to FAT32 conversion, some disk utilities that require FAT16 format will not work with FAT32. A message will appear if you use one of these utilities. Contact the disk utility manufacturer to find out if there is a FAT32 compatible update.
- If you convert your hard disk unit to FAT32 using the drive Converter, you will not be able to use the dual boot function to run former versions of Windows (Windows 95 [Version 4.00.950], Windows NT 3.x, Windows NT 4.0 and Windows 3.x). However, if you are connected to a network, former versions of Windows will be able to access your FAT32 hard disk via the network.

To summarize, FAT 32 allows additional performance, improved hard disk management (cluster sizes inferior to FAT 16) and reliability.

We recommend using FAT 32 in most cases, except for removable disk drive cartridges, which will be exchanged and used in other, drives connected to other machines.

Appendix 2 – Question & Answers

How does the USB bus work?

Using the computer resources, the USB port can tell when a peripheral is connected or disconnected. The bus automatically decides which resources need to be used, the bandwidth to use (high or low speed) and will offer these resources without any user intervention.

Computer users with USB ports can use USB compatible peripherals as if they were connecting a light to an ordinary power socket.

What types of USB peripherals can be connected to my computer?

The following peripherals are available for standard USB ports : monitors (hub and signals calibration), audio peripherals, telephones, modems, mice, CDRoms, game consoles, scanners and printers. Thanks to the 12 Mbit/s transmission speed of the high-speed USB bus, storage and video peripherals can be used. With the integration of telephones and computers USB provides a competitive interface for ISDN (Integrated Services Digital Network) products and PBX.

Do I need special software to use USB peripherals?

On iMac and Power Macintosh computers, LaCie provides LaCie specific drivers to use USB storage products from LaCie.

Windows 98 is delivered with a USB driver. This enables your computer to automatically detect USB peripherals. However, new USB products will need a driver update if they are to function correctly or to benefit from maximum characteristics. USB peripherals compatible with Windows 95 are usually delivered with a driver update diskette.

Warning, LaCie USB peripherals will only work with Windows 98 version 4.10.1998 or later or Macintosh OS V8.5.1 or later.

How can you compare a USB bus to a IEEE 1394/Firewire bus?

They are very different in terms of positioning, use, availability and price. USB characteristics are set and available. USB is best suited to traditional computer connections like keyboards, mice, game consoles and hand-held scanners. However the 12 Mbits/sec high-speed USB bus is also adapted to more advanced applications such as games, hifi/audio and high compression video peripherals, like MPEG-1 and MPEG-2. And, using a USB peripheral doesn't add to the cost of the configuration.

The 1394 is suited to applications needing high-speed transfers like digital recorders, video cameras and video disk drives (DVD). It is currently necessary to install a 1394 expansion card in your computer.

