

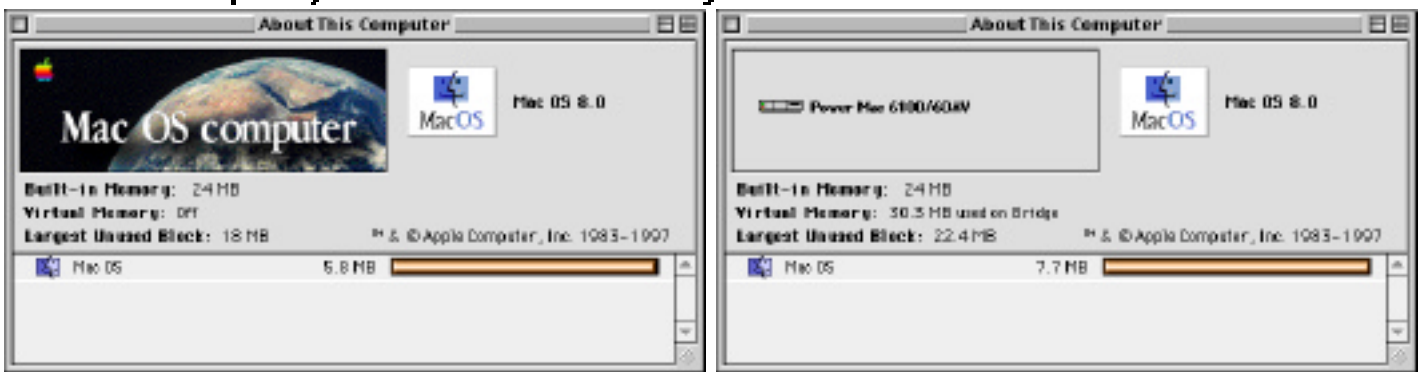


Mac Identifier 2.2

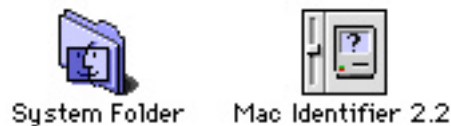
Introduction

Mac Identifier 2.2 is a shareware control panel that puts back the model name and icon identification lost in the "About This Computer" ("About This Macintosh" under Mac OS 7.5) window under Mac OS versions 7.5 and later. It also brings back the model name to the flagship naming service on AppleTalk networks, allowing network administrators to know which Macintosh is which on their network.

About This Computer, before and after installing Mac Identifier



Installation



To install Mac Identifier, drag its icon to the System Folder icon or place it directly into the Control Panels folder of the System Folder. Mac Identifier does not modify the system file. Therefore, when it is removed from the System folder and the Macintosh is rebooted, names and icons will be displayed as they were before it was installed. Should it be necessary to remove Mac Identifier, drag the extension to the trash. If Mac Identifier created a preferences file, it would be named "Mac Identifier 2.1 Prefs" (or "Mac Identifier 2.0 Prefs" if it had been created under Mac Identifier 2.0) and located in the Preferences folder inside the System Folder. Drag it also to the trash, then empty the trash. Reboot your machine and the system default will be restored.

Details of Operation

Mac Identifier is a true fat binary. It runs native on Power Macintoshes when necessary.

Mac Identifier contains a database of Apple Macintosh model designations and icons and alters system operation so that Macintosh applications can obtain and provide this information, for example, when the Finder displays it in the "About This Computer" window and when the system software broadcasts it over an AppleTalk network (i.e., the flagship naming service).

The database in Mac Identifier 2.2 contains the names and configurations of all Apple Macintoshes up through July 1997. The database does not contain the names of any clones, however.

Mac Identifier identifies Macintoshes based on a value found in the Macintosh ROM called the gestaltMachineType. However, because there are many models of the Macintosh where the same value is used for similar, but not identical Macintosh models and sometimes even for dissimilar models, Mac Identifier attempts to determine the features of your specific Macintosh and find the name that best matches those features. Even so, Mac Identifier can guess wrong. In addition, over time Mac Identifier's database will become outdated. For these scenarios, Mac Identifier provides a control panel interface where both the name and icon can be corrected or changed to whatever you wish.

The Control Panel

You need to edit the control panel settings only if you want to customize Mac Identifier's default identification of your Macintosh.

The layout of the Mac Identifier control panel is different depending on whether the system software is Mac OS 7.5.x/7.6.x or Mac OS 8. In both cases, the first pane gives descriptive information about Mac Identifier and the lowermost pane indicates whether Mac Identifier has been registered.

The layout of the control panel differs under the different system software versions because Mac OS 8 offers two ways to set the name and icon identification for the "About This Computer" window. Under Mac OS 8, the name and icon can be set as it is under Mac OS 7.5.x/7.6.x using the standard name and icon, or it can be set by choosing a picture resource (i.e., a PICT).

The Mac Identifier control panel



Setting the Name

The following describes setting the standard name and icon identification, available under both Mac OS 7.5.x/7.6.x and Mac OS 8. Under Mac OS 8, to choose a name and icon, select Original (Mac OS 7.5.x/7.6.x) from the Display Method menu. The upper pane contains controls for the name identification and the lower pane for icon identification. In both panes, there are Default and Custom radio buttons, which you select to tell Mac Identifier whether to use its default or a custom identification, respectively. In the upper pane, the default name is displayed to the right of the Default radio button. To the right

of the custom radio button is a popup menu. This menu contains alternative names for all the known Macintoshes with same gestaltMachineType as your Macintosh. If Mac Identifier has no alternative names available for your Macintosh, the menu is dimmed. If the menu is available, you can choose one of the names from it, or you enter your own name if you wish (or if you need to because Mac Identifier doesn't recognize your Macintosh). The name you enter cannot exceed 23 characters (including spaces). This is a limitation of the "About This Computer" display window.

Setting the Icon

Similarly, you can do the same with icon identification. When you click the custom button, Mac Identifier prompts you for a file containing an icon family resource. Icons used to identify the Macintosh are part of what is called an icon family resource. When complete, an icon family resource consists of nine individual icon resources. The resources are divided into three different sizes, large (32 x 32 pixels), small (16 x 16), and mini (12 x 12). Within each size, there are three icons each, one for displaying in 256 colors, one for displaying in 16 colors and one for displaying in black and white. The black and white resource also contains the mask, an important part of an icon family resource needed for displaying the icon correctly. Not all the icon resources are required. For most users, only the ICN# (large, black and white), which also contains the mask for the large icons, and icl8 (large, 256 colors) are important.

Creating a Custom Icon Family Resource

If you are going to create icons for your computer, you must use an icon editor, such as the one found in ResEdit or Resorcerer. To begin, create a file in either of these programs and in that file, create an icon family resource. You can give the file any name you like and put it wherever you want. Mac Identifier will let you navigate the disk to find it when you are ready to choose it. You might want to begin with the ICN#, the black and white, large icon, because it contains the mask and because it is the size that is displayed most often. You should also create an icl8 resource if your monitor displays 256 colors or more (most monitors do). The resource ID you use for the icon family resource does not matter since the open file dialog in Mac Identifier lets you navigate among all the icon family resources in a file. Similarly, the resource attributes do not matter as Mac Identifier will adjust them as necessary when it copies the icon family resource to its preferences file. After you have selected the icons in Mac Identifier and have verified they work (by rebooting Mac Identifier and examining the About This Computer window), you can delete the file you created if you don't want to keep an extra copy of the icons on your disk.

Setting the Picture

Under Mac OS 8, you can supply a picture instead of the name and icon for the "About This Computer" window. Under this scenario, Mac Identifier still supplies the name and icon assigned under the standard name and icon scheme to any system service that requests it. Thus, for a Macintosh on an Appletalk network, the flagship naming service will broadcast the name assigned here. To choose a picture, select Custom Picture (Mac OS 8) from the Display Method menu. Then click the Choose Picture button. Mac Identifier prompts you for a file containing a picture resource. The Macintosh often stores graphical images in the form of pictures, also known as PICTs. PICTs can be

stored as data files or as individual resources. To display in the "About This Computer" window, the picture must be 248 pixels long and 42 pixels high.

Creating a Custom Picture Resource

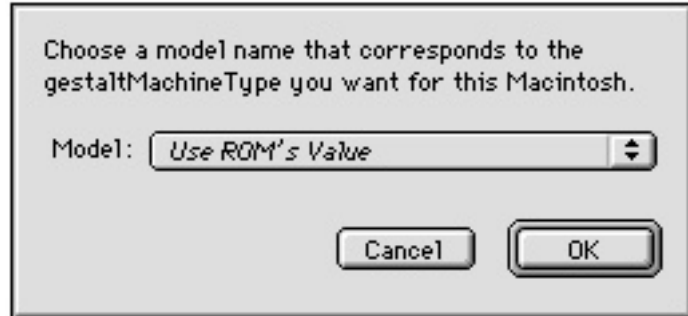
If you are going to create a picture for your computer, you must use a graphics package, such as Canvas 5. To begin, create a file in this program and draw what you want for a picture. After you are done, you will need to move the picture to a resource file. You can follow the instructions given under creating icons above for more information on preparing the resource file. Once you are ready, you can paste in the picture via the clipboard into it. As with icon resources, the resource ID you use does not matter since the open file dialog in Mac Identifier lets you navigate among all the picture resources in a file. Similarly, the resource attributes do not matter as Mac Identifier will adjust them as necessary when it copies the picture resource to its preferences file. After you have selected the picture in Mac Identifier and have verified it works (by rebooting Mac Identifier and examining the About This Computer window), you can delete the files you created if you don't want to keep extra copies of the picture on your disk.

This is an advanced feature that you would need only under special circumstances.

Altering the Macintosh's gestaltMachineType

If for some reason you need to make applications or programs believe that the Macintosh you are running is a model other than itself, you can use Mac Identifier to alter its gestaltMachineType value, the number used internally to determine the base model of your Macintosh.

Altering the Macintosh's gestaltMachineType



To do this, in the control panel, click on the text of the default name itself. A dialog appears with a popup menu where you can choose any of the gestaltMachineTypes in Mac Identifier's database. The popup menu choice displays the gestaltMachineType followed by its default name in Mac Identifier's database. To use the internal value, choose the first choice for "Use ROM's Value." The name you chose does not take effect until after a reboot. At that time, Mac Identifier will operate as if your Macintosh is actually the Macintosh you assigned it to be.

Changes Since Version 2.1

- Fixed a bug that caused a crash when Mac Identifier's registration window was closed.
- Fixed a bug that prevented Mac Identifier from identifying a Macintosh's processor's clock speed.
- Fixed a bug that caused Mac Identifier to misidentify Macintoshes that did not have any specific attributes associated with them in Mac Identifier's

database.

- Added support for Mac OS 8, including support for the Appearance Manager in the control panel display.
- Added a feature to allow the user to alter the Macintosh's gestaltMachineType number, that can effectively turn a Macintosh into another type of Macintosh.
- The registration window now displays in color.

Changes Since Version 2.0

- Mac Identifier no longer causes a system crash at startup time on a 68K-based Macintosh when the CFM-68K Enabler is installed. (This file is present under OpenDoc, the Desktop Printing Software 2.0, and America Online 3.0.)
- The Apple Internet Router contains a bug that caused it to lock up when Mac Identifier was running. This has been resolved.
- Mac Identifier now supports posting the Macintosh's name on the network under Open Transport.

Special thanks to Patrick Delahanty and to all the beta testers.

About the Author

Mac Identifier was written by Maurice Volaski and is published by Flux Software.

Flux Software maintains a web site at <http://www.fluxsoft.com/>. You can access this site directly by clicking on the URL in the Mac Identifier control panel window (You must have Internet Config installed and configured for this to work).

Visit it to learn all about Flux Software's other products and to obtain the latest versions of Mac Identifier. For technical support and other information, please contact Flux Software directly at support@fluxsoft.com.

Mac Identifier comes with no warranty, either expressed or implied. Both Flux Software and Maurice Volaski, the author, claim no liability for any damages arising out of the use, misuse, or lack of use of this software.

Shareware Trial

Try out Mac Identifier for thirty days for free. Though Mac Identifier is not crippled in any way, it posts a registration reminder at every startup. During the initial trial period, you can dismiss the window by clicking the close box (or by dragging it to a different part of the screen). It will continue to reappear at each reboot until Mac Identifier has been registered. So if you like it, please pay the shareware fee of \$5 (US). Registered users of Mac Identifier 2.1 or 2.0 do not have to re-register. If you are a registered user of Mac Identifier 2.1 or 2.0 and didn't receive an announcement regarding version 2.2, and you need re-registration instructions, please ask for them by emailing support@fluxsoft.com.

Registration

Mac Identifier uses the Kagi Shareware system for submitting shareware payments. Kagi Shareware is a payment processing service that can accept many forms of payment including major credit cards. To pay via Kagi, please use the Register program that accompanies the Mac Identifier package (if your

package did not contain Register, you can obtain a complete Mac Identifier package by visiting the Flux Software web site or via ftp at the Flux Software ftp site at <ftp.fluxsoft.com>). After you fill in the fields for payment, you can, depending on the payment method, mail, fax, or email the payment and form to Kagi Shareware. Alternatively, you can pay online by going to our registration web page at <http://www.fluxsoft.com/downloadregister.html>.

Distribution

Mac Identifier may be distributed freely so long as it is accompanied by its About text and the Register program and that none of these items have been modified.